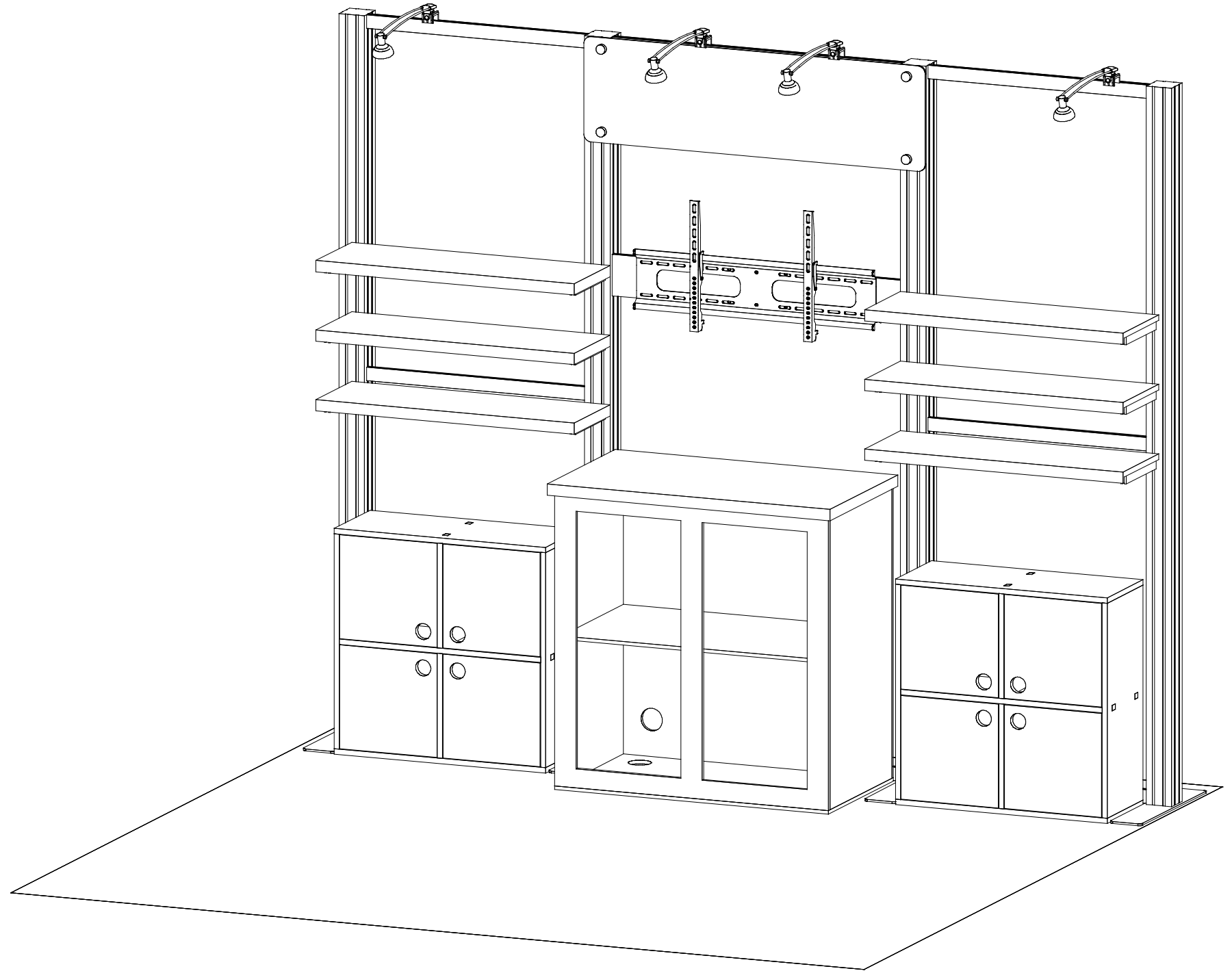


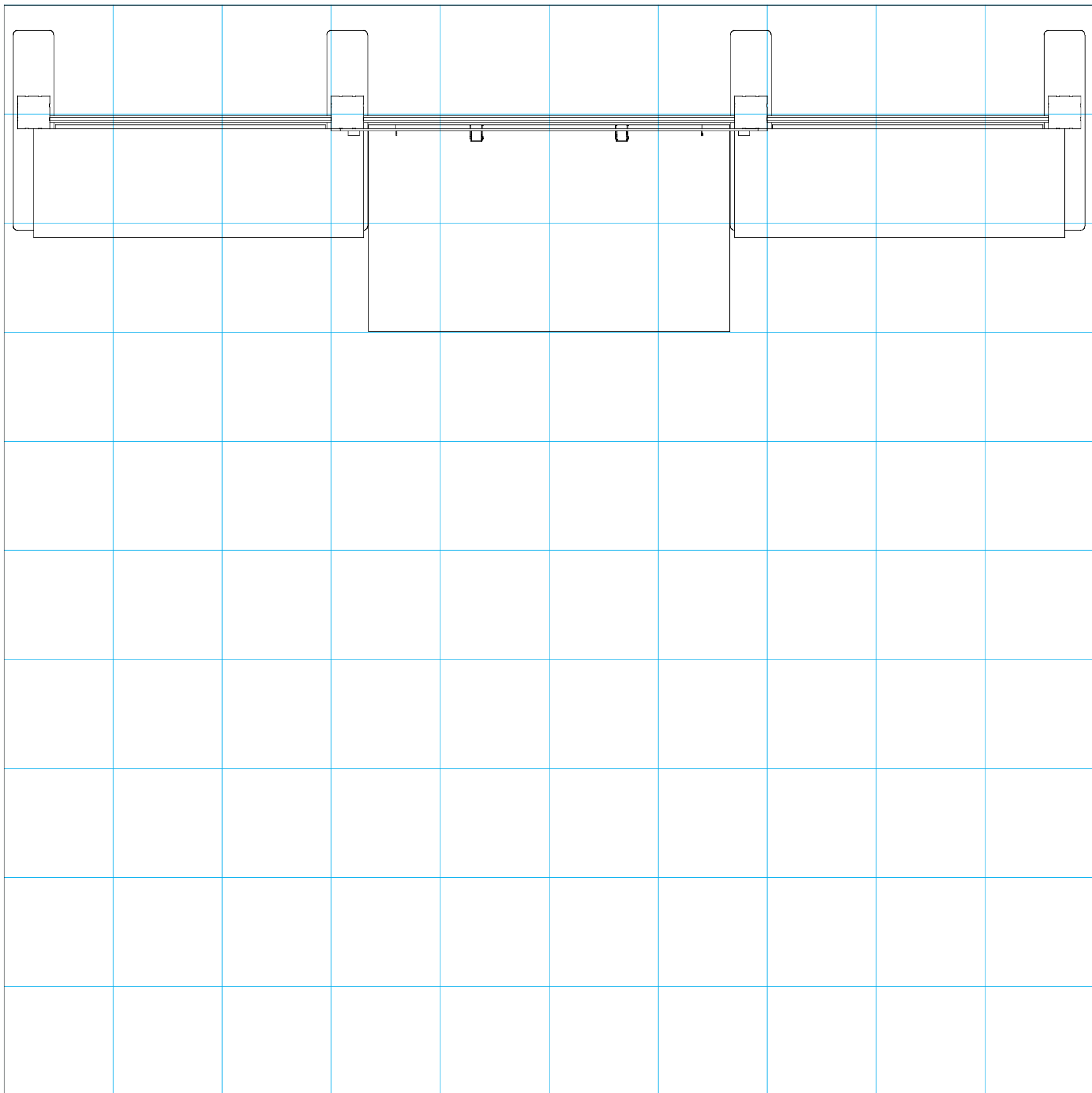
Plan View

10'

10'



SETUP INSTRUCTIONS



= 1 sq foot

General Setup Instructions

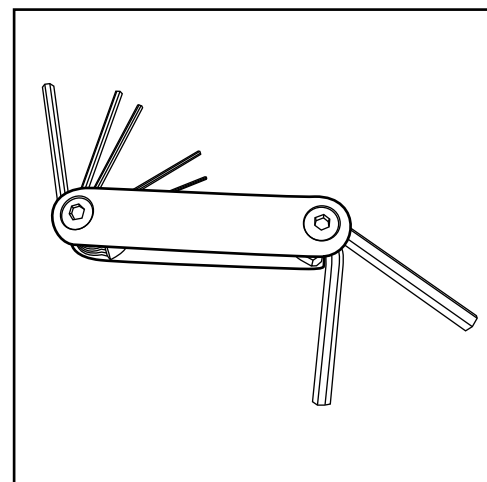
- Read entire setup instruction manual prior to unpacking parts and pieces.
- The setup instructions are created specifically for this configuration.
- Setup instructions are laid out sequentially in steps, including exploded views with detailed explanation for assembly.

Cleaning & Packing

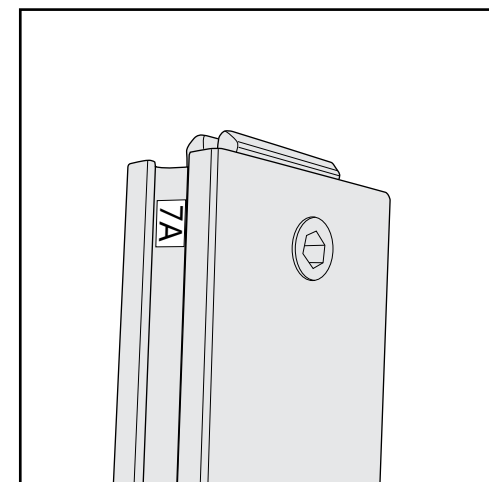
- For Cleaning Metal, Plex, & Laminate Parts: Use a **MILD NON-ABRASIVE** cleanser and soft cloth/paper towel to clean all surfaces.
- Keep exhibit components away from heat and prolonged sun exposure. **Heat and UV exposure will warp and fade components.**
- Retain all provided Packing Materials. All provided packing materials are for ease of repacking & component protection.

Disassembly

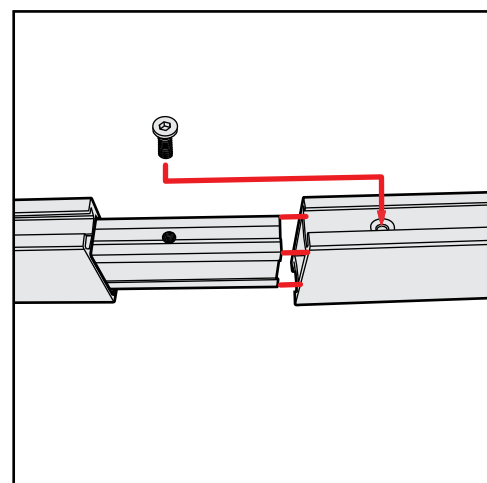
- For loss prevention, tighten all set screws and locks during disassembly.



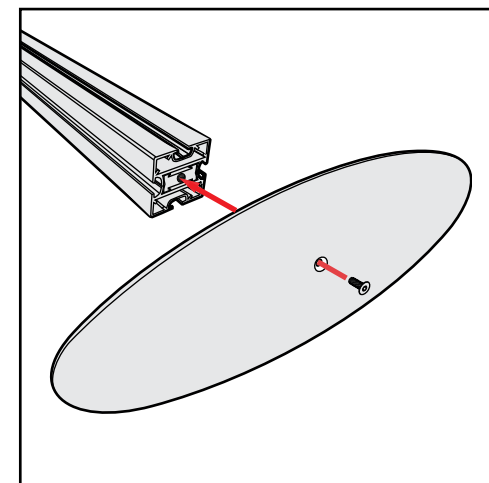
Hex Tool - Essential for Assembly



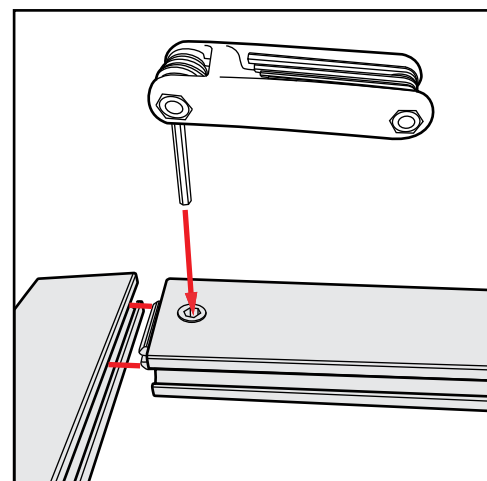
Part Identification - Numbering



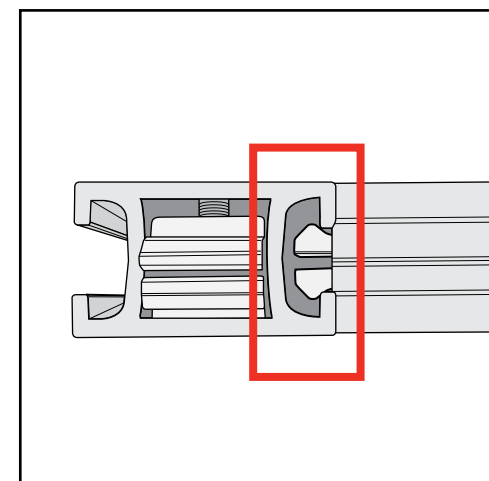
Spline Connection



Base Plate & Extrusion Connection



Extrusion & Lock Connection



Engaged Lock



WARNING



DO NOT USE POWER TOOLS



LADDERS OR LIFTS
MAY BE REQUIRED



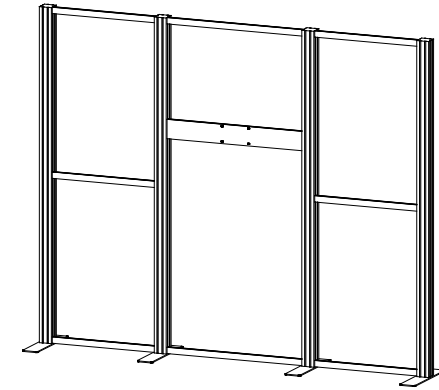
ALL CONNECTIONS MUST
BE TIGHTLY SECURED

CRATE PACKING

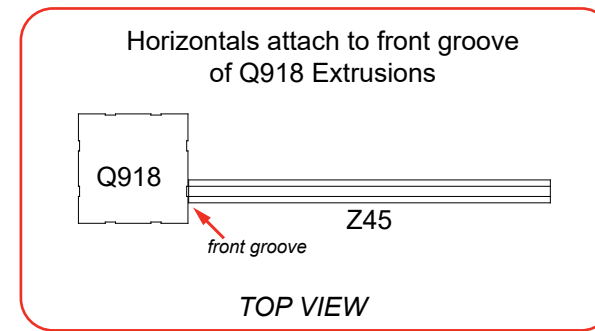
Item	Qty.	Description
1	1	4.5" x 22" Base Plate
2	1	95.5"h Q918 Vertical Extrusion
3	1	95.5"h Q918 Vertical Extrusion
4	1	95.5"h Q918 Vertical Extrusion
5	1	95.5"h Q918 Vertical Extrusion
6	1	30.959"w Z45 Horizontal Extrusion w/ Velcro
7	1	30.959"w Z45 Horizontal Extrusion w/ Velcro
8	1	30.959"w Z45 Horizontal Extrusion w/ Velcro
9	1	40.835"w Z45 Horizontal Extrusion w/ Velcro
10	1	40.835"w Z140 Horizontal Extrusion w/ Velcro
11	1	40.835"w Z45 Horizontal Extrusion
12	1	30.959"w Z45 Horizontal Extrusion w/ Velcro
13	1	30.959"w Z45 Horizontal Extrusion w/ Velcro
14	1	30.959"w Z45 Horizontal Extrusion w/ Velcro

Steps:

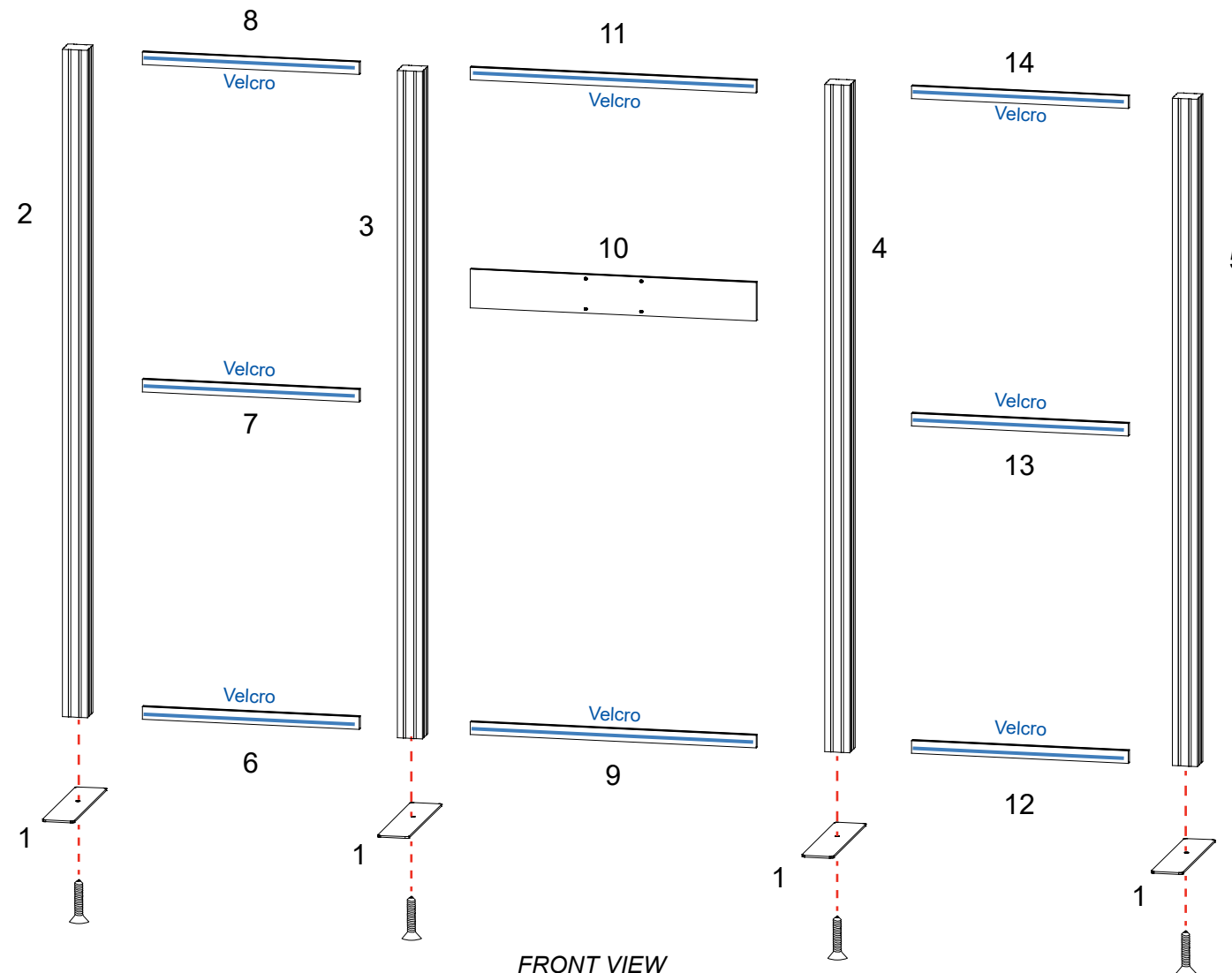
- 1) Attach Base Plates [1] to bottom of verticals [2,3,4,5], using bolts.
- 2) Connect horizontals [6,7,8] between verticals [2,3]
- 3) Assemble horizontals [9,10,11] between verticals [3,4].
- 4) Attach horizontals [12,13,14] between verticals [4,5].



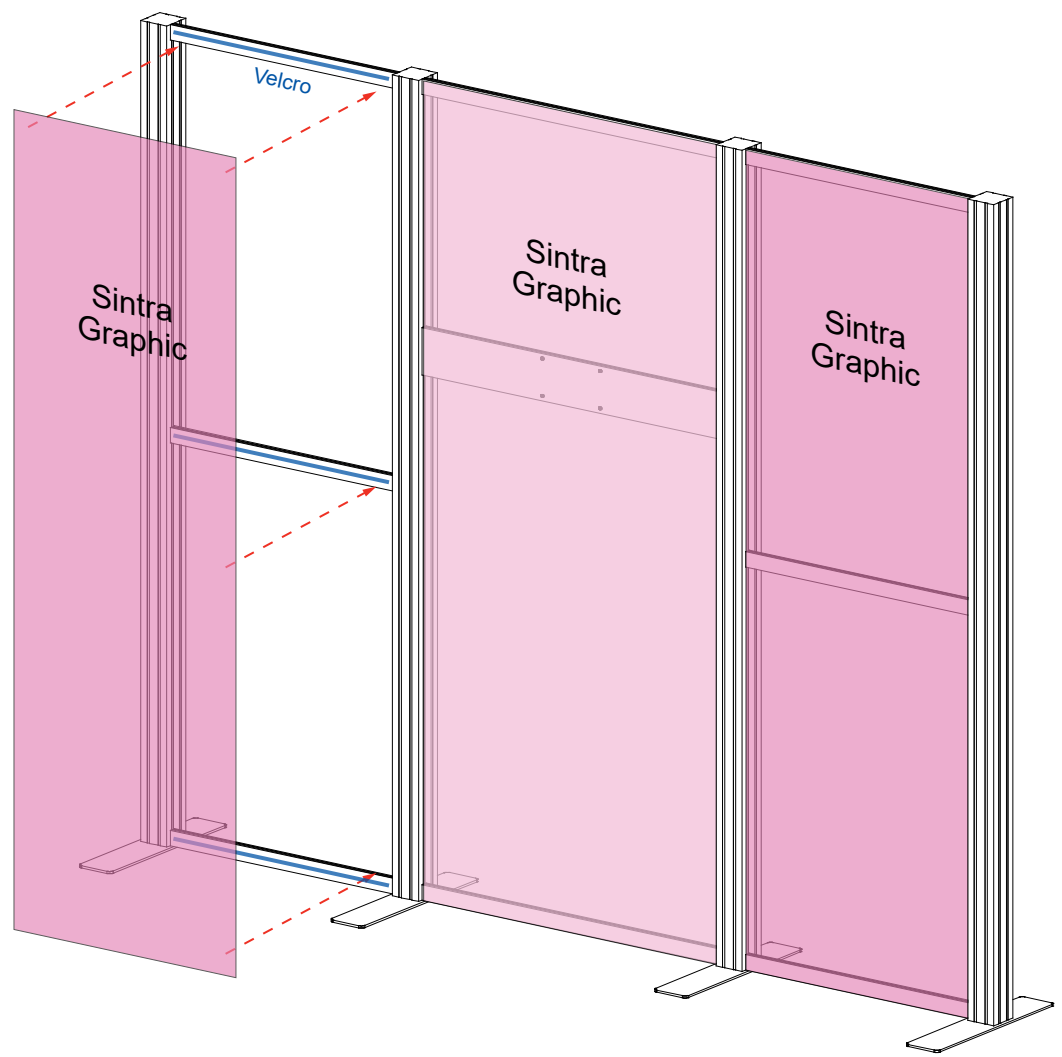
When assembled



Velcro on horizontals faces front of booth

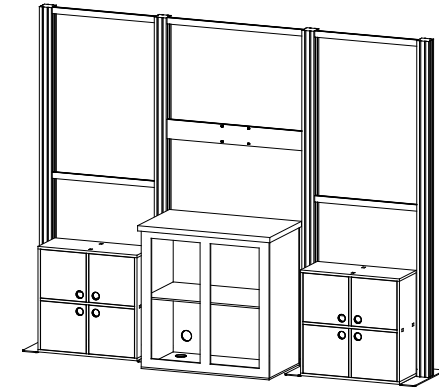


Steps:
1) Affix Sintra graphics to backwall using Velcro.

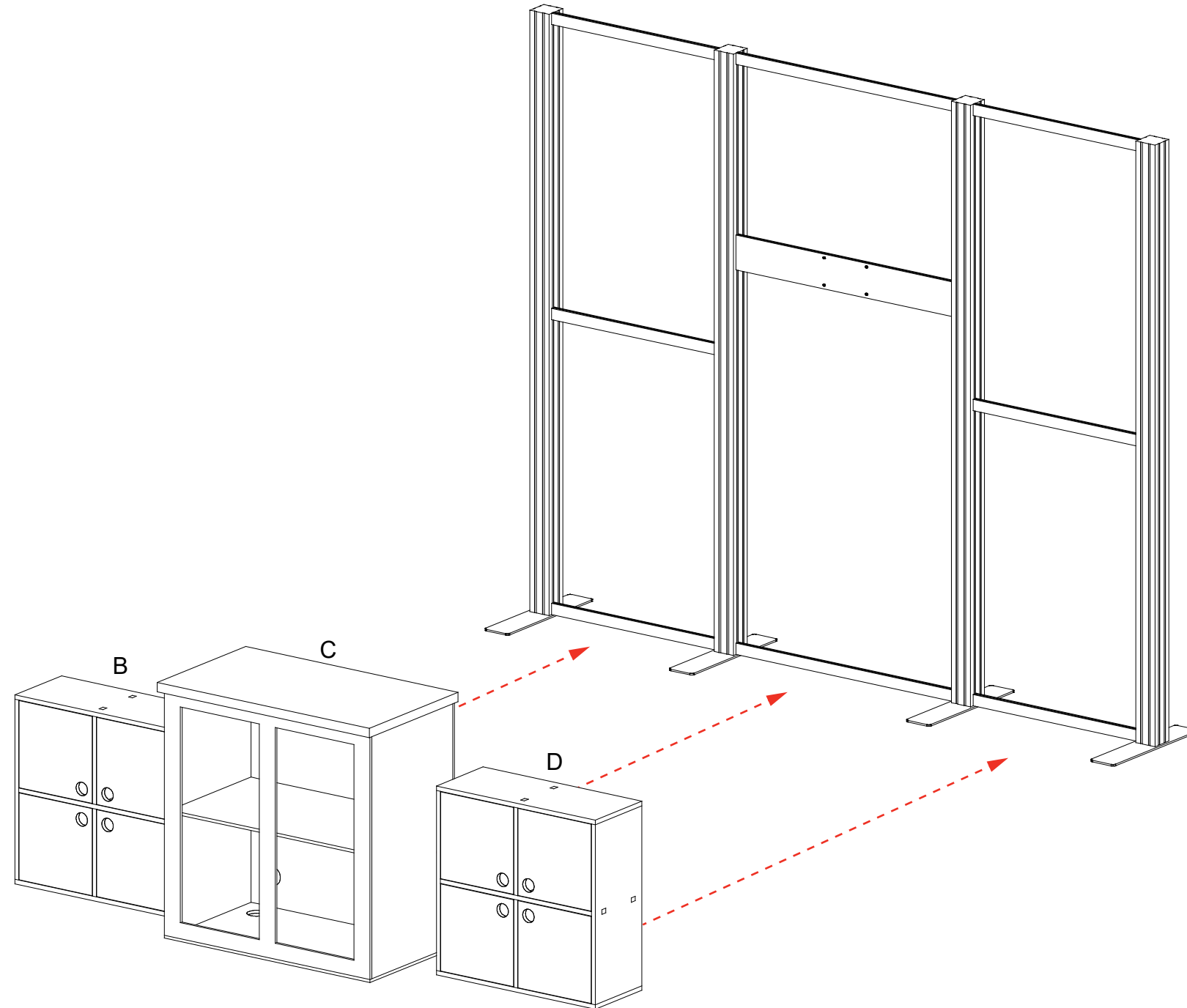


Item	Qty.	Description
B	1	29.75"w x 30"h x 12"d Backwall Counter
C	1	39.75"w x 40.75"h x 22.75"d Center Counter
D	1	29.75"w x 30"h x 12"d Backwall Counter

Steps:
1) Place backwall counters [B,C,D] against backwall as shown.

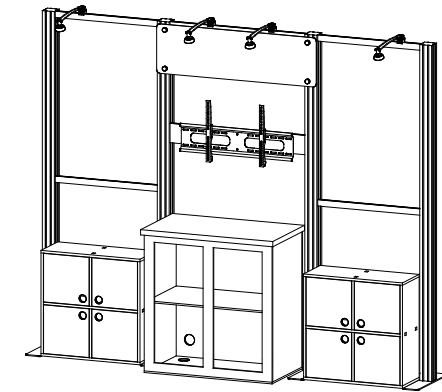


When assembled



Item	Qty.	Description
--	4	Perf Light w/ clamp
--	1	Large Monitor Mount

- Steps:
- 1) Attach lights to top of backwall as shown. See **Light Attachment** detail.
 - 2) Connect Header Graphic to verticals [3,4] using screw caps. See **Header Attachment** detail.
 - 3) Install Monitor Mount to horizontal [10] using standoff barrels. See **Monitor Mount Attachment** detail.



When assembled

*** Light Attachment**

Attach lights to Horizontal where desired and tighten in place.

*** Header Attachment**

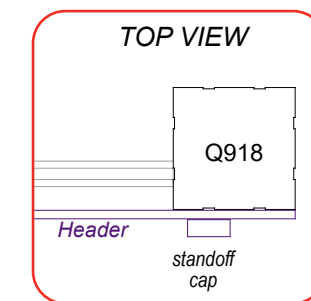
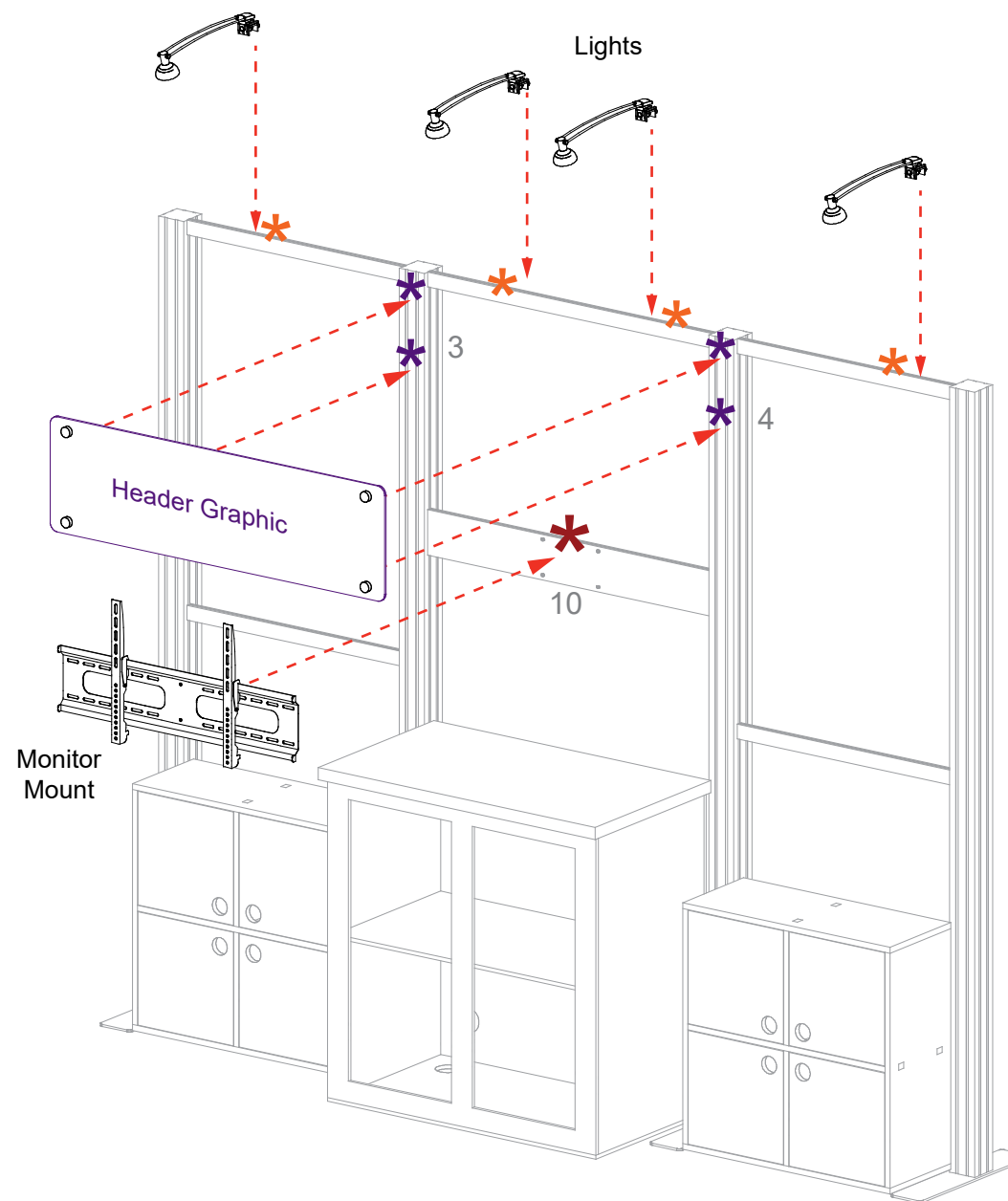
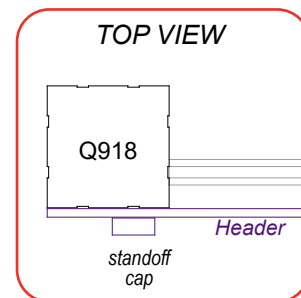
Slide V4 connector into vertical channel of extrusion. Tighten set screw to secure connector in place.

Attach Graphic to V4 connector using screw cap.

*** Monitor Mount Attachment**

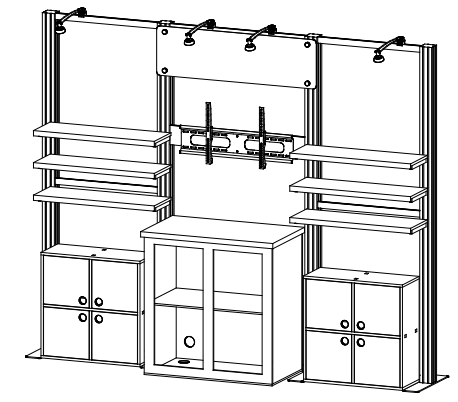
Attach Standoff Barrels to horizontal extrusion. Then attach Monitor Mount to standoff barrels using bolts.

Note: Monitor mount installs through Sintra graphic.



Item	Qty.	Description
G	6	36.333"w x 12"d Shelf w/ Z32

Steps:
1) Attach Shelves [G] to verticals [2,3], [4,5]. See [Shelf Attachment](#) detail.



When assembled

